

# SWSPCP Fall Newsletter

*An International Organization with over 2,000  
Professional Wetland Scientists certified since 1994*

## In this Article

|                                      |        |
|--------------------------------------|--------|
| <i>From the President</i>            | 2,3    |
| <i>Student Rep</i>                   | 4      |
| <i>South African Wetland Society</i> | 5      |
| <i>International SWSPCP COVID-19</i> | 6<br>7 |
| <i>Short Courses</i>                 | 8,9    |
| <i>Board of Directors</i>            | 11     |

The Society of Wetland Scientists was formed to promote understanding, conservation, protection, restoration, science based management and sustainability of wetlands. The Society developed the Professional Certification Program (PCP) in 1994 for certification of wetland science training and experience, with the aim of serving the public and governments' need to identify qualified individuals to assess and manage wetland



resources.

## Important Topics:

- **COVID-19 Resources**  
A new resource page about COVID-19 issues and possible annual maintenance fee reduction has been added to our website
- **SWS 2021 Annual Meeting**  
Spokane, Washington (U.S.) | June 1 - 4, 2021

SWS will be hosting the 2021 Annual Meeting in Spokane, Washington, USA, June 1-4, separate from the postponed RE3 Conference in Quebec City. As a reminder, SWS is no longer a partner in the RE3 Conference.

## *What are the requirements?*

### Academic Requirements – PWS / WPIT\*

- ✓ 15 credits in Biological Sciences, such as biology, botany, zoology, ecology, etc.
- ✓ 15 credits in Physical Sciences, such as chemistry, soils, hydrology, geology, etc.
- ✓ 6 credits in Quantitative Sciences, such as math, computer science, statistics, etc.
- ✓ 15 credits in Specialized Wetland Course Work (PWS only), such as wetland plant taxonomy, wetland hydrology, soil morphology, wetland mapping, wetland restoration & wetland delineation, etc.

\* Before applying, applicants must have earned a Baccalaureate degree or higher.

### Certification Questions?

Contact the SWS Professional Certification Program:

2800 W. Higgins Rd. Suite 440

Hoffman Estates, IL 60169

Toll Free: 877.226.9902

Fax: 847.885.8393

Program Coordinator—Adrianna Borczyk [info@wetlandcert.org](mailto:info@wetlandcert.org)

## *From the President*



I hope this greeting finds everyone well and staying safe during the pandemic! First, I'd like to recognize Matt Simpson as the immediate Past President of SWSPCP for all the hard work and accomplishments that he and the entire leadership and committees at SWSPCP have achieved over the last year. I am honored to take over the role of SWSPCP President and to be working with a team who is passionate about the goal of certifying individuals who have the education, skills, and expertise to assess and manage the world's wetlands.

Who would have thought that this is the way we'd be doing business in 2020? But, I believe, despite these unprecedented times, we are resilient and poised to learn how to work effectively for wetlands while facing the challenges posed by our new paradigm. To that end, SWSPCP has made a number of adjustments to help us to do just that. The SWSPCP Board of Directors sprang into action to develop an Annual Maintenance Fee Waiver and a 5-year Certification Renewal Extension to assist members that have been negatively impacted by COVID-19 and find it difficult either to pay their maintenance / renewal fees or have been unable to attain their renewal certification points through lost/reduced employment, canceled training, workshops, and conferences, etc. Additionally, in May we started a SWSPCP Connect Session on Zoom that gives all PWS's and WPIT's an opportunity to come together, in an interactive setting, to share their experiences, challenges, and solutions to working in wetlands during the pandemic. Each time we "Connect", we find more synergies and clever ways of adapting to our current situation. While it would have been ideal to connect in person at the SWS Annual Meeting, there are some silver linings to our virtual meetings – they are more frequent, accessible to individuals from around the world, recorded for on-demand viewing, and reduce our carbon footprint! Our next session is scheduled for Sept. 15<sup>th</sup>, 2020 at 11:30am ([https://zoom.us/webinar/register/WN\\_Bcw42CHoQkORTih4kLj84A](https://zoom.us/webinar/register/WN_Bcw42CHoQkORTih4kLj84A)). All these new resources can be found on our COVID-19 Resources page at: [https://www.wetlandcert.org/covid\\_resources.html](https://www.wetlandcert.org/covid_resources.html).

**SWSPCP Connect  
session is scheduled  
for Sept. 15<sup>th</sup>, 2020 at  
11:30am**

Another exciting development is that the SWSPCP is expanding its global reach by finding "Champions" that are promoting the Program in countries outside the U.S. and becoming certified as PWS's themselves. Our newest members hail from Peru, Mexico, Australia, China, Taiwan, and Denmark. More applications are still coming in from Canada, Sri Lanka, South Africa and, hopefully, more countries in South America, as well. Recently, the SWSPCP Board of Directors made it possible for developing countries to benefit from a lower fee structure, making the program more globally accessible. Furthermore, we are building partnerships with other like-minded organizations to raise the profile of the Program as ***THE*** international standard for certification of wetland professionals. Specifically, we are formalizing a Memorandum of Cooperation with the South African Wetland Society to provide greater collaboration and enhanced opportunities for the members of both organizations. Additionally, Matt Simpson has been working diligently with leaders of the Ramsar Convention on Wetlands, to gain support for SWSPCP's formal recognition as a professional standard for wetland scientists at the next Convention of the Parties in China in 2021.



Additionally, we have begun to update our website and promotional materials to be inclusive of other cultures and languages. Please take a look at our new flyers in English and Spanish [https://www.wetlandcert.org/docs/WPIT-PWS\\_Flyer\\_English.pdf](https://www.wetlandcert.org/docs/WPIT-PWS_Flyer_English.pdf)  
[https://www.wetlandcert.org/docs/WPIT-PWS\\_Flyer\\_Espanol.pdf](https://www.wetlandcert.org/docs/WPIT-PWS_Flyer_Espanol.pdf)

SWSPCP is also nurturing its connection to students as the next generation of wetland professionals. The SWSPCP Board of Directors just added a non-voting, student representative position to the Board. The Board believes that it is important to have our finger on the pulse of the next generation of certified wetland scientists and we are eager to get student feedback and input on the activities and initiatives of the Program. The Student Representative will be appointed for a term of one to three years and will be eligible for a yearly stipend to either apply to become a WPIT or to pay their annual WPIT maintenance fee. [https://www.wetlandcert.org/login.html?r=ann\\_ren](https://www.wetlandcert.org/login.html?r=ann_ren)

At the other end of the spectrum, the SWSPCP has a new designation for *seasoned* wetland professionals that have remained certified as a PWS for 20+ years. That is the Senior Professional Wetland Scientist (SPWS) and I am honored to have received my certificate and pin with my SWPS designation just last month. What a nice way to recognize the contributions these folks have made to SWSPCP and the profession of wetland science – congratulations to all the new SPWS's!

Finally, we are embarking on an exciting process to develop a strategic plan over the course of the next year. We will work diligently to outline specific actions for meeting our objectives and cementing our vision. We need to clearly articulate the benefits of becoming certified to professionals working in wetlands. Just as importantly, we need to communicate the significance of that certification to the public so that they can identify practicing wetland professionals that will serve the community with a proficient and principled approach, enhancing the recognition of SWSPCP around the world.

In closing, I hope that you can get engaged in the happenings of the SWSPCP to help us move all these initiatives forward. Please do not hesitate to contact me or any one of our Board of Directors to see where you can plug in. In the meantime, I encourage you to visit wetlands in your local area (while practicing physical distancing from other people, of course), like I did at the beginning of the pandemic, when I saw this 900-year-old cypress tree (7th oldest in the state of Florida) in the Goethe State Forest that is just 45 minutes from my house. Who knew?! Wetland responsibly, my friends!



Kimberli Ponzio  
SWSPCP President

## *Call for a SWSPCP Student Representative*



**„The Student Representative shall be a non-voting member of the Board of Directors“**

The Society of Wetland Scientists Professional Certification Program (SWSPCP) values the perspectives of students in fulfilling the mission of SWSPCP to identify qualified individuals who have the education and experience to serve as experts in the assessment and management of wetland resources. To gain insights from students on the application and certification process, and on the initiatives of the Program, the SWSPCP Board of Directors established a position on the Board for a Student Representative (Rep), as a non-voting member. The Student Rep will be appointed for a 1-3-year term, depending on active, graduate student status. The applicant for Student Rep should be an SWS member (1 year minimum) and should have attended an SWS Annual Meeting at least once in the past 3 years. The Student Rep will be offered a stipend to cover their WPIT (Wetland Professional in Training) or PWS (Professional Wetland Scientist) application and/or annual maintenance fees during their term of service. Responsibilities and duties of the Student Rep include: attending Board meetings; providing reports on activities and initiatives that affect students who have been or those who desire to be certified as a WPIT or PWS; representing student members of SWS from around the globe; participating in discussions relating to the role of students in the Program; and promoting interactions and common activities between SWSPCP and student groups in SWS. Please submit this form, with a 1-page biography, to be considered for the position of SWSPCP Student Representative.

Download the application form below :

[file:///C:/Users/Mariusz/Downloads/swspcp\\_student\\_rep\\_application\\_form%20\(1\).pdf](file:///C:/Users/Mariusz/Downloads/swspcp_student_rep_application_form%20(1).pdf)

The application form should be filled out online and sent to:

[info@wetlandcert.org](mailto:info@wetlandcert.org)

### **ACTIVE MEMBERS:**

**Emeritus 56**

**SPWS 481**

**PWS 1649**

**WPIT 323**

## **Annual Maintenance Fees**

Don't forget to pay your annual maintenance fees or renew your certification today.

[https://www.wetlandcert.org/login.html?r=ann\\_ren](https://www.wetlandcert.org/login.html?r=ann_ren)

## *SWSPCP Signing of the MoC with SAWS*



Considering that the SAWS and the SWSPCP share the common goal of encouraging sound science in wetland research, management, restoration, policy, and conservation, and that meeting this goal requires enhanced collaboration between the two organizations and their various partners;

The SWSPCP and the SAWS have established a formal partnership to achieve greater collaboration and provide enhanced opportunities for their members.

The Parties agreed to collaborate to promote the management, conservation, and research of wetlands, by enhancing their existing communication and cooperation and by increasing communication with other networks and groups.

### **What is SAWS ?**

South African Wetland Society was established to build and promote excellence, professionalism and ethics in the Wetland Community of Practice of South Africa.

[https://  
society.sawetlands.org  
/index.htm](https://society.sawetlands.org/index.htm)

## **Vision and Mission**

The society's Vision and Mission are as follows:

### **Vision**

To build and promote excellence, professionalism and ethics in the Wetland Community of Practice of South Africa.

### **Mission**

To develop and maintain professional standards and best management practices of subscribed wetland practitioners in South Africa in order to promote wetland sciences, conservation and management through accreditation, collaboration and self-regulation of all society members.



## *International Application info Process Details*

[https://www.wetlandcert.org/application\\_international.html](https://www.wetlandcert.org/application_international.html)

- \* Section 1 - Personal Information
- \* Section 2 - Code Of Ethics. All fields are required
- \* Section 3 - College / University Education
- \* Section 4 - Wetland Related Courses/Training Required for PWS
- \* Section 5 - Qualifying Full-Time Experience
- \* Section 6 - Additional Supportive Information
- \* Section 7 - Statement of Expertise Essay
- \* Section 8 - Professional References
- \* Comments - General Comments
- \* Payment - FEE PAYMENT

When you have completed ALL the sections for your application and made a payment, you MUST click the FINAL SUBMIT button to submit your application for review.

An automated email will be sent to each of your references requesting that they complete the online REFERENCE LETTER form on your behalf.

- **Australia 1**
- **Thailand 1**
- **Canada 13**
- **UK 3**
- **China 4**
- **Denmark 1**
- **Taiwan 1**
- **Mexico 1**
- **Peru 1**

## *Current International Numbers*

The Globalization Committee is meeting every other month to work on strategies for expanding membership and awareness of SWSPCP outside of North America. Our numbers are growing!

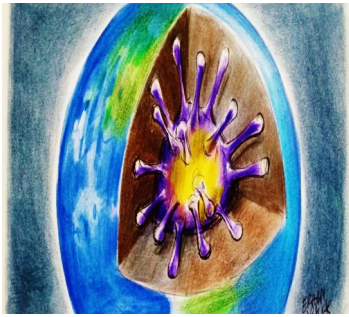
## *Chase for Global Champions*



Global expansion is a tough and lengthy process. However, the Globalization Committee has a plan to identify Global Champions who will promote and develop the SWSPCP Program in their region, as well as, filter and support applications made by wetland professionals. The Champions will provide supportive information regarding the applicant's education and experience to help support the Certification Committee in their reviews of applicants.

If you would like to let the Globalization Committee know about a wetland professional you think could be eligible for certification, please send the nomination to [info@wetlandcert.org](mailto:info@wetlandcert.org).





## *COVID - 19 Resources*

Current Senior Professional Wetland Scientists (SPWS), Professional Wetland Scientists (PWS), and Wetland Professionals in Training (WPIT) may be granted a full or partial waiver of their annual SPWS/PWS/WPIT maintenance fees, due to financial hardship caused by the COVID-19 pandemic.

## FEE WAIVER DUE TO COVID-19 FINANCIAL HARDSHIP - REQUEST FORM

Requests will be reviewed on a case-by-case basis by the SWS-PCP Financial Waiver Panel, following completion and submittal of this form to: [info@wetlandcert.org](mailto:info@wetlandcert.org).

Waivers of SPWS/PWS/WPIT annual maintenance fees will be granted for a 1-year period and shall only apply to annual Professional Certification Program maintenance fees. Financial waiver request forms must be completed by the applicant and include a brief summary that clearly communicates the reason for the request.

[https://www.wetlandcert.org/covid\\_request\\_form.html](https://www.wetlandcert.org/covid_request_form.html)

[https://www.wetlandcert.org/covid\\_request\\_form.html](https://www.wetlandcert.org/covid_request_form.html)

## CERTIFICATION RENEWAL EXTENSION DUE TO COVID-19 HARDSHIP - REQUEST FORM

Current Senior Professional Wetland Scientists (SPWS) and Professional Wetland Scientists (PWS) may be granted an extension to apply for certification renewal due to hardship caused by the COVID-19 pandemic. Requests will be reviewed on a case-by-case basis by the SWS-PCP Renewal Certification Committee, following completion and submittal of this form to: [info@wetlandcert.org](mailto:info@wetlandcert.org)

Deadline extensions will be granted for up to a 2-year period. Request forms must be completed by the applicant and include a brief summary that clearly communicates the reason for the request.

[https://www.wetlandcert.org/covid\\_request\\_form\\_renewal.html](https://www.wetlandcert.org/covid_request_form_renewal.html)

**"During COVID19, it was healing for the broader SWSPCP community to be able to gather virtually to discuss practical matters such as finances, lay-offs, and safety issues with wetland practitioners, all with professional guidance from organizers who empowered genuine sharing."**

**Ellen Kracauer  
Hartig, Sr. PWS**

## SWS Annual Meeting

*The Society of Wetland Scientists Professional Certification Program (SWSPCP) holds a PWS Mixer in conjunction with the Society of Wetland Scientists Annual Meeting. The 2021 International Conference will be held in Spokane, Washington on June 1 - 4, 2021.*



<https://www.swsannualmeeting.org/>

## New Short Courses

The Society of Wetland Scientists Professional Certification Program has developed a process to provide existing and future certified wetland scientists with certainty that a particular professional short course will qualify as part of the additional or ongoing education requirements. To help applicants ensure that professional short courses will be accepted by the Certification Review Panel and the Certification Renewal Committee, proponents (sponsors) of said courses may apply to the Professional Short Course Pre-Approval Program to have their courses evaluated and pre-approved. Such approval provides certain predictability that the course offered will receive credit or points, as appropriate, by applicants seeking PWS certification or certification renewal. A list of pre-approved professional short courses is provided below.

### Wetland Delineation Short Course

#### Wetland Delineation and Regional Supplement Training

Philip J. Quarterman, PWS

9755 SW Barnes Road, Suite 300 Portland, OR 97225

(503) 372-3562 - Mobile: (503) 358-3673

(503) 526-0775

[www.whpacific.com](http://www.whpacific.com)

#### Wetland Delineation & Regional Supplement Training

Marc Seelinger

621 Starburst Lane, Raleigh, NC 27603

(877) 479-2673

[www.swampschool.org](http://www.swampschool.org)

#### Basic Wetland Delineator Training

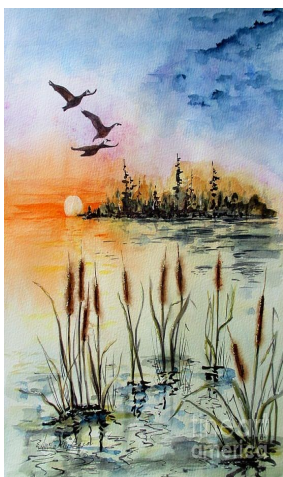
Barbara Tiner

PO Box 612, Leverett, MA 01054

413-441-3708

[Barbara@wetlanded.com](mailto:Barbara@wetlanded.com)

[www.wetlanded.com](http://www.wetlanded.com)





## Wetland Delineation & Corps Permitting Training

Aaron Hoefer

3413 Hunter Road, San Marcos, TX 78132

512-353-3344

ahoefer@whitentongroup.com

[www.whitentongroup.com](http://www.whitentongroup.com)



## Monitoring and Assessment of Wetland and Riparian Ecosystems

### Wetland Regulations: Understanding Federal, State, and Local Regulations and the Permitting Process in Montana

Stephanie McGinnis Education Outreach Coordinator

335 Culbertson Hall, Bozeman, MT 59717

(406) 994-6671

(406) 994-6660

mcginnis@montana.edu

[www.mtwatercourse.org](http://www.mtwatercourse.org)

## Southern Vegetation Identification for Wetland Delineation

### Vegetation Identification for Wetland Delineation

#### Introduction to Wetland Identification

#### Methodology for Delineating Wetlands

#### Wetland Construction Design

Suzanne Hills

102 Ryders Lane, New Brunswick, NJ 0890

848-932-7234

suzanne.hills@rutgers.edu

[www.cpe.rutgers.edu](http://www.cpe.rutgers.edu)

## ACOE Wetland Delineation, Waters of the US and Regional Supplement Training

### Wetland Permitting Training

### Regional Supplement Wetland Delineation Training

### Virtual ACOE Wetland Delineation, Waters of the US and Regional Supplement Training

Richard Chinn, PWS

804 Cottage Hill Way, Brandon, FL 33511

813.655.7549

rchinn@richardchinn.com

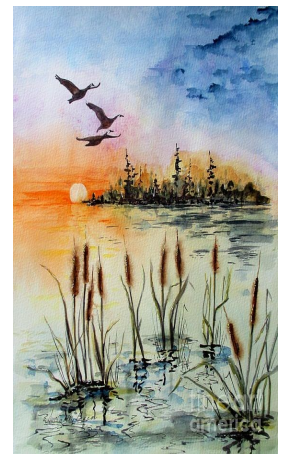
[www.richardchinn.com](http://www.richardchinn.com)

## North Dakota State University

805 17th Ave W, West Fargo, ND 58078

701-361-0950

edward.dekeyser@ndsu.edu



#### Wetland Mitigation Design Principles

Wetland Studies and Solutions, Inc.

5300 Wellington Branch Dr, Suite 100, Gainesville, VA

703-679-5600

[aconnelly@wetlands.com](mailto:aconnelly@wetlands.com)

[www.wetlands.com](http://www.wetlands.com)

#### Identification of Wetland and Adjacent Upland Plants of the Midwest

Orbis Environmental Consulting

PO Box 10235, South Bend, IN

423-303-9079

[aharris@orbisec.com](mailto:aharris@orbisec.com)

[www.orbisec.com](http://www.orbisec.com)

#### Wetland Delineation

Ohio Rapid Assessment Method for Wetlands (ORAM)

Vegetation Index of Biotic Integrity (VIBI)

Identification of Common Wetland Plants

Primary Headwater Habitat (PHWH)

Wetland Botany

Ohio Amphibians

Introduction to Wetlands

Mick Micacchion

4673 Northwest Parkway, Hilliard, OH 43026

614-403-2085

[mmicacchion@mwbinst.com](mailto:mmicacchion@mwbinst.com)

[www.midwestbiodiversityinst.org](http://www.midwestbiodiversityinst.org)

#### Wetland Delineation Workshop

Grass, Sedge and Rush Identification Workshop

Southeastern Botany, LLC

310 N. Excelda Ave, Tampa, FL

727-776-7734

[southeasternbotany@gmail.com](mailto:southeasternbotany@gmail.com)

[www.southeasternbotany.com](http://www.southeasternbotany.com)

#### Fundamental Hydric Soils

Mike Callahan

PO Box 612, Palmyra, PA 17078

717-304-5218

[mike@soilhub.com](mailto:mike@soilhub.com)

[www.soilhub.com](http://www.soilhub.com)

#### Gailey Environmental, LLC: 36-Hour Wetland Delineation Training

Adam Gailey

P.O. Box 32, Avella, PA 15312

412-770-4698

[adam@gaileyenvironmental.com](mailto:adam@gaileyenvironmental.com)

## **BOARD OF DIRECTORS**

|                     |  |
|---------------------|--|
| Kimberli Ponzio     | President  |
| Gillian Davies      | President-Elect  |
| Matthew Simpson     | Immediate Past President   |
| Robbyn Myers        | Secretary General, Outreach Committee Chair,<br>Awards Committee Chair |
| Yvonne Vallette     | Treasurer  |
| Rob Shannon         | Certification Review Panel Chair                                       |
| John Lowenthal      | Certification Standard Committee Chair                                 |
| John Lowenthal      | Certification Appeals Board Chair                                      |
| Patrick Frost       | Certification Renewal Committee Chair                                  |
| Matthew Schweisberg | Ethics Committee Chair   |
| John Lowenthal      | Nomination Committee Chair   |
| Kurt Philipp        | CESB Representative  |
| Scott Jecker        | SWS/ SWSPCP Representative   |
| Jon Kusler          | Public Member  |

Do you want to get involved on a committee ?  
Send us your resume to  
[info@wetlandcert.org](mailto:info@wetlandcert.org)